



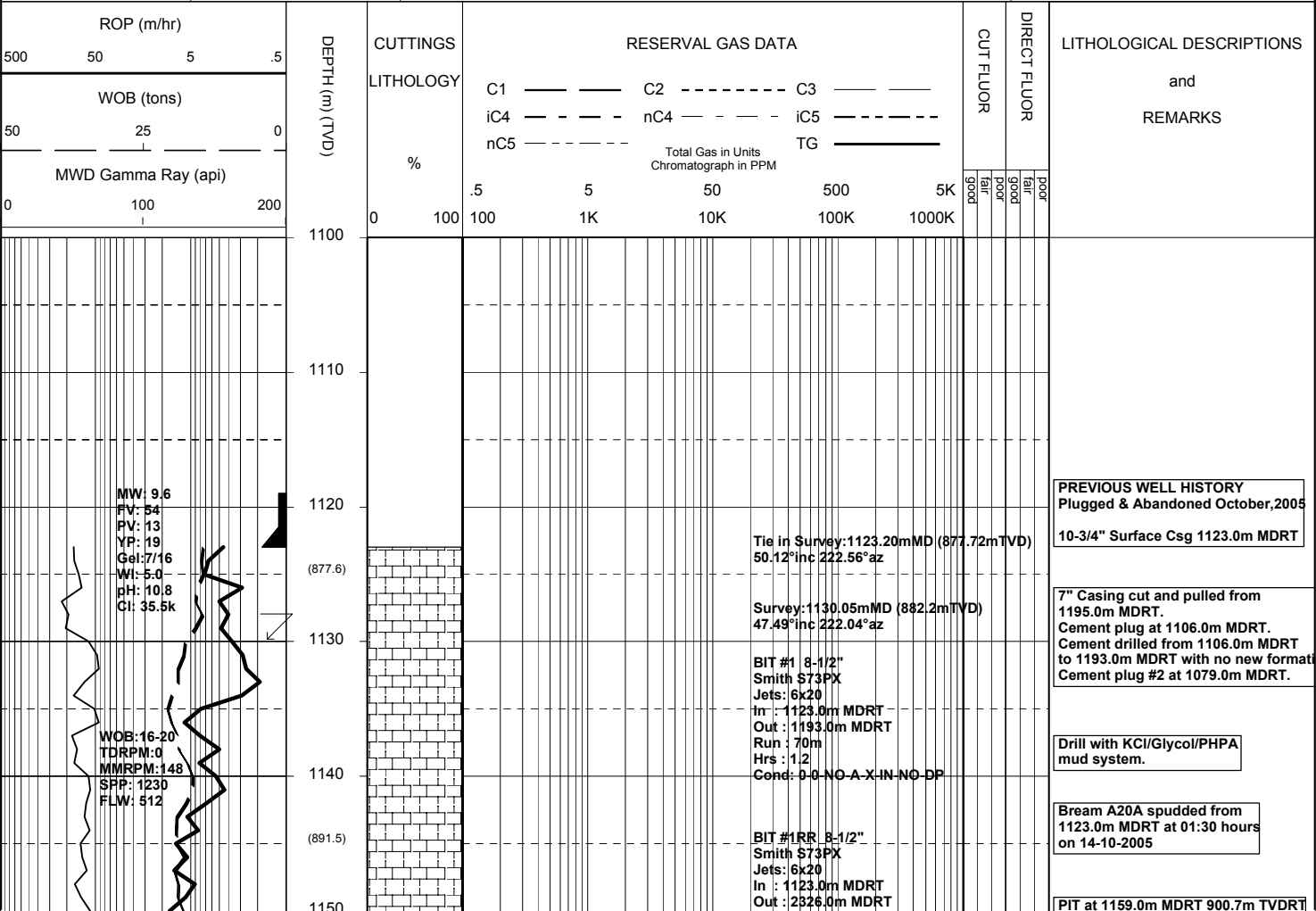
MASTERLOG

BMA A20A



GENERAL	POSITION	HOLE / CASING INFO	DATE / DEPTH	ENGINEERS
Country : AUSTRALIA	GDA Co-ord X : 147 46 20.056 E		Spud Date : 14-10-2005	Mark Smith
Permit : VIC L13	GDA Co-ord Y : 38 29 58.899 S	8-1/2" Hole to	Total Depth Date : 17-10-2005	V.B. Jagarlamudi
Field : Bream	MGA Co-ord X : 567338.25mE		Total Depth : 2326.0m	Steve Oades
Basin : GIPPSLAND	MGA Co-ord Y : 5738458.02mN	10-3/4" Surface Csg at 1123.0 mMDRT	True Vertical Depth : 2029.7m	
Well Type : DEVELOPMENT	RT to MSL : 32.82 m	7" Production Csg at	Log Scale : 1/ 500	
Rig Name : NABORS 453	RT to Sea Bed : 92.22 m			

ABBREVIATIONS		LITHOLOGY LEGEND				ENGINEERING LEGEND	
MW Mud Weight	WOB Weight on Bit (klbs)	CLAYSTONE	MARL	BRYOZOA	CARB FRAGMENT	CASING SHOE	WIRELINE LOGS
FV Funnel Viscosity	RPM Rotations Per Min	SILTSTONE	LIMESTONE	RADIOLARITES	QUARTZITE	LINER HANGER	MDT POINTS:
PV Plastic Viscosity	FLW Flow Rate (gpm)	SST: F - V FINE	DOLOMITE	ECHINOIDS	INTRUSIVES	BIT CHANGE	PRESSURE ONLY
YP Yield Point	SPP Pump Pressure (psi)	SST: MEDIUM	CHERT	CORALS	GLAUCONITE	DEVIA. SURVEY	SAMPLE
Gel Gel Strength	RR Re-Run Bit	SST: COARSE	CONGLOMERATE	FORAMINIFERA	PYRITE	SWC UNRECOV	SEAL FAILURE
WL Water Loss	TG Trip Gas	SHALE	COAL	LITHIC FRAGMENT	CEMENT	SIDEWALL CORE	TIGHT
KCl Potassium Chloride	CG Connection Gas					CORE	
Cl Chlorides	BG Background Gas						
Incl Inclination	DGP Drilled Gas Peak						
Az Azimuth	MM Mud Motor						



WOB: 5-10
TDRPM: 60
MMRPM: 153
SPP: 1500
FLW: 528

Run : 1203.0m
Hrs : 54.4
Cond:

Survey: 1158.55mMD (902.6mTVD)
41.35°inc 225.01°az

CALCILUTITE:lt gy-med lt gy,silty
i/p g/t CLSLT,tr foram,frm-mod hd,
sbbiky.

WOB: 5-20
TDRPM: 60
MMRPM: 153
SPP: 1850
FLW: 605

99 / 1 / Tr

1180
(921.6)

Survey: 1186.68mMD (924.5mTVD)
36.10°inc 221.21°az

CALCILUTITE:lt gy-med lt gy,silty
i/p g/t CLSLT,tr foram,frm-mod hd,
sbbiky.

99 / 1 / Tr

WOB: 7-12
TDRPM: 62
MMRPM: 178
SPP: 2050
FLW: 613

1210
(954.1)

Survey: 1215.77mMD (948.2mTVD)
35.19°inc 227.08°az

CALCILUTITE:lt gy-med lt gy,silty
i/p g/t CLSLT,tr foram,frm-mod hd,
sbbiky.

99 / 1 / Tr

1240
(970.6)

Survey: 1244.76mMD (972.1mTVD)
33.70°inc 227.07°az

WOB: 6-22
TDRPM: 60
MMRPM: 177
SPP: 2075
FLW: 608

1260
(987.5)

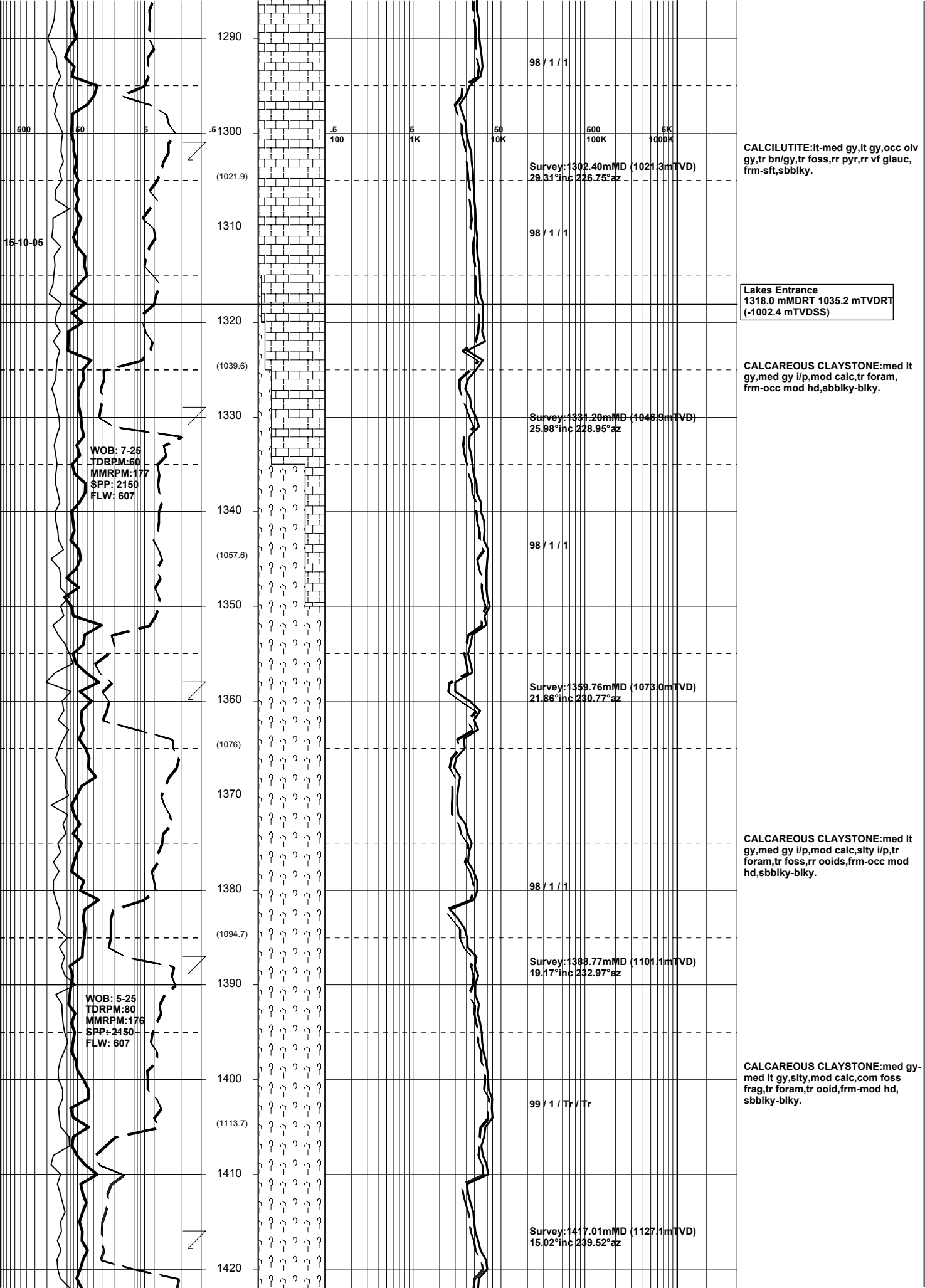
99 / 1 / Tr

MW: 9.6
FV: 76
PV: 30
YP: 44
Gel: 10/22
WI: 4.0
pH: 11.7
Cl: 35.5K

1270
(1004.6)

Survey: 1273.63mMD (996.5mTVD)
30.94°inc 226.91°az

CALCILUTITE:lt gy-med lt gy,silty
i/p g/t CLSLT,tr foram,tr bnsh/gy
foss,frm-mod hd,sbbiky,tr sbfiss.



1290
1300
1310
1320
1330
1340
1350
1360
1370
1380
1390
1400
1410
1420

500 50 5

100 1K 10K 100K 1000K

98 / 1 / 1

Survey: 1302.40mMD (1021.3mTVD)
29.31°inc 226.75°az

CALCILUTITE:lt-med gy,lt gy,occ olv gy,tr bn/gy,tr foss,rr pyr,rr vf glauc, frm-sft,sbblky.

98 / 1 / 1

Lakes Entrance
1318.0 mMDRT 1035.2 mTVDRT
(-1002.4 mTVDSS)

CALCAREOUS CLAYSTONE:med lt gy,med gy i/p,mod calc,tr foram, frm-occ mod hd,sbblky-blky.

Survey: 1331.20mMD (1046.9mTVD)
25.98°inc 228.95°az

98 / 1 / 1

Survey: 1359.76mMD (1073.0mTVD)
21.86°inc 230.77°az

CALCAREOUS CLAYSTONE:med lt gy,med gy i/p,mod calc,sity i/p,tr foram,tr foss,rr ooids,frm-occ mod hd,sbblky-blky.

98 / 1 / 1

Survey: 1388.77mMD (1101.1mTVD)
19.17°inc 232.97°az

CALCAREOUS CLAYSTONE:med gy-med lt gy,sity,mod calc,com foss frag,tr foram,tr ooid,frm-mod hd,sbblky-blky.

99 / 1 / Tr / Tr

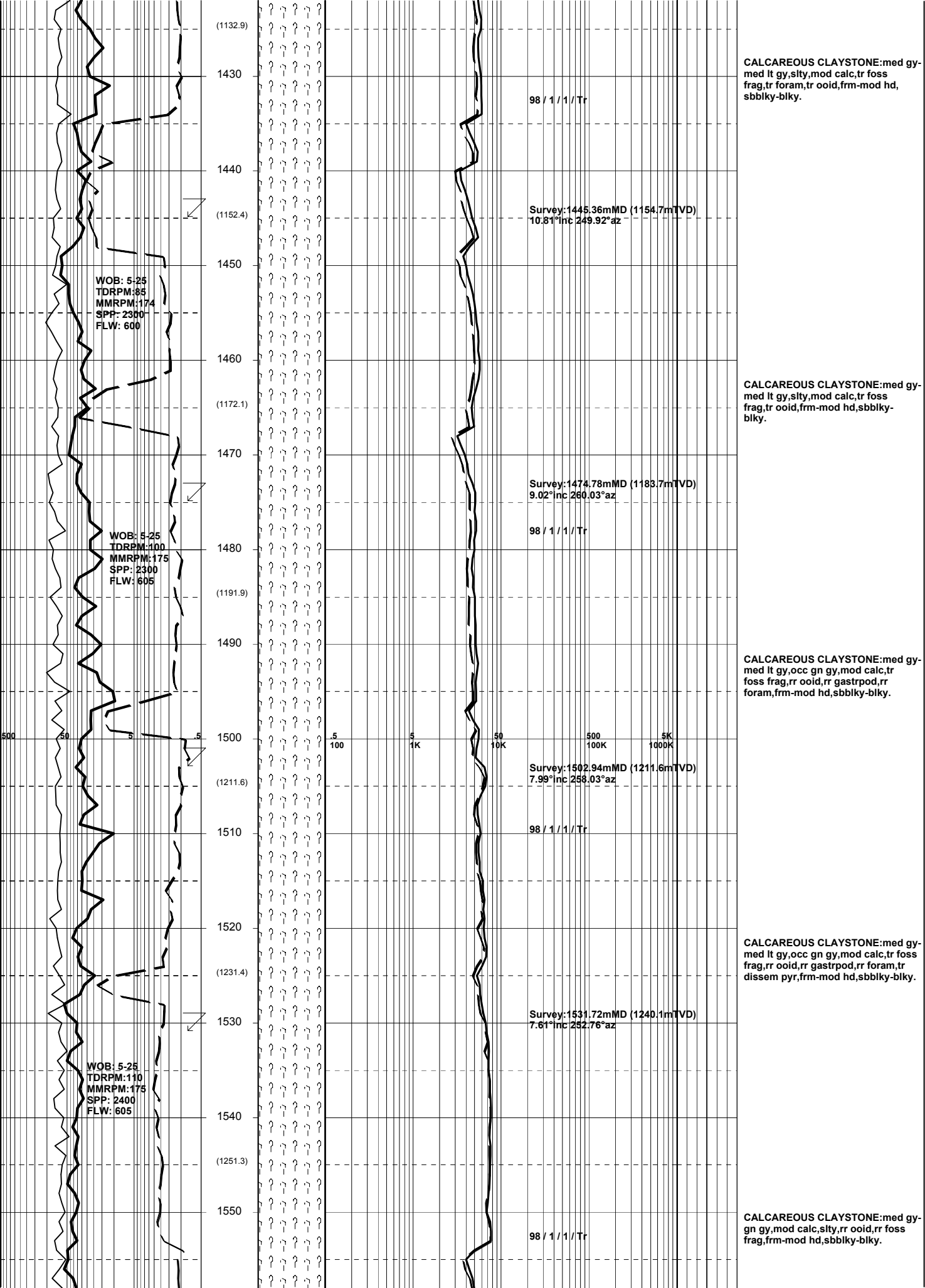
Survey: 1417.01mMD (1127.1mTVD)
15.02°inc 239.52°az

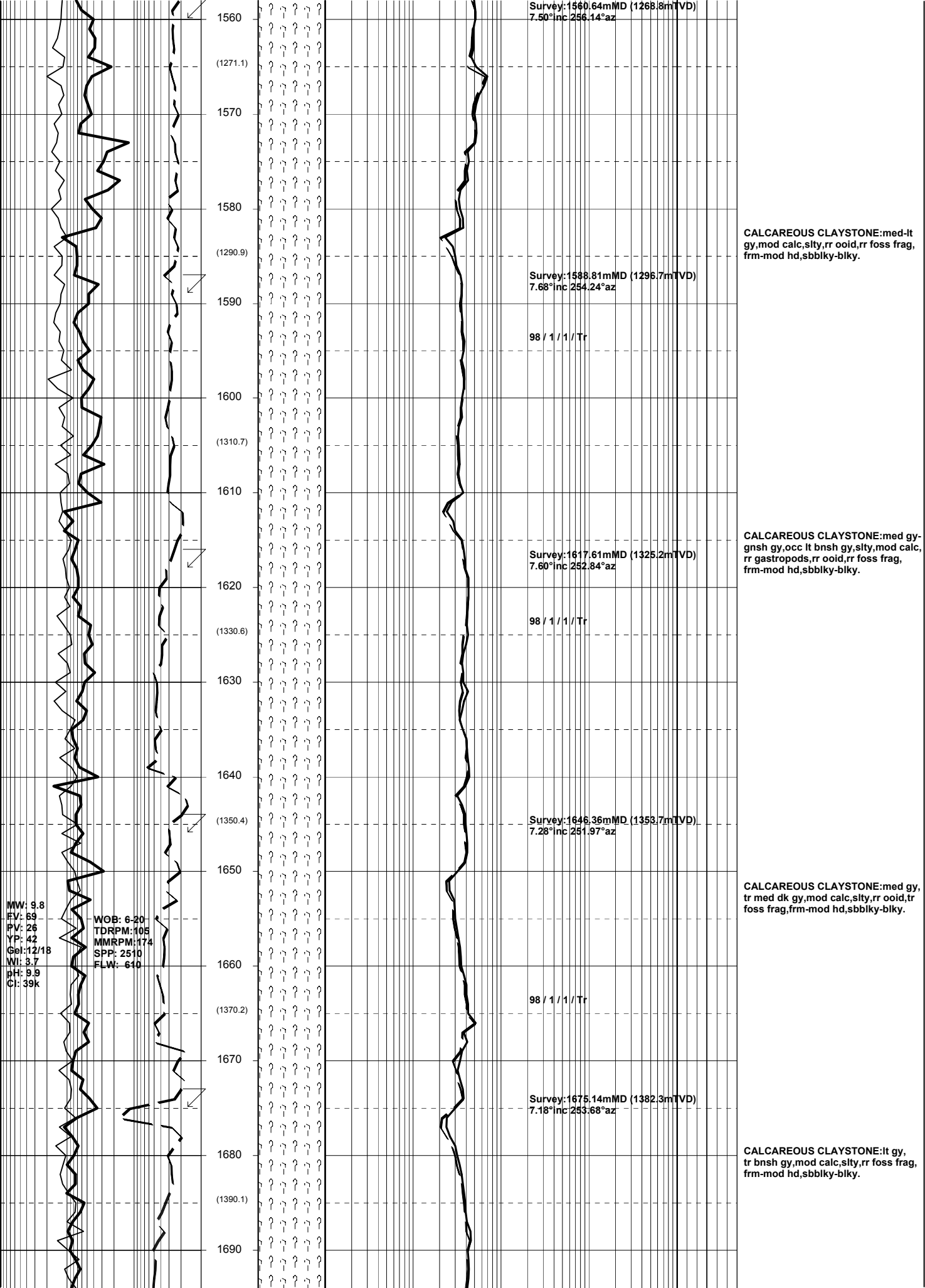
15-10-05

WOB: 7-25
TDRPM: 60
MMRPM: 177
SPP: 2150
FLW: 607

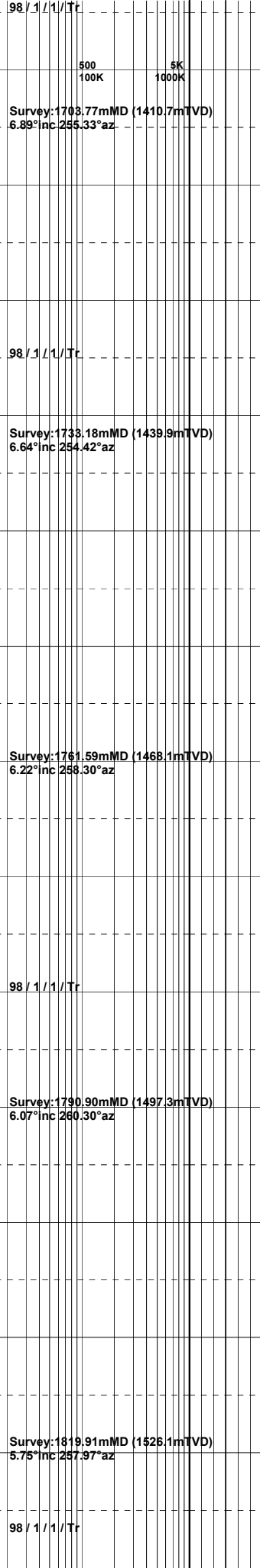
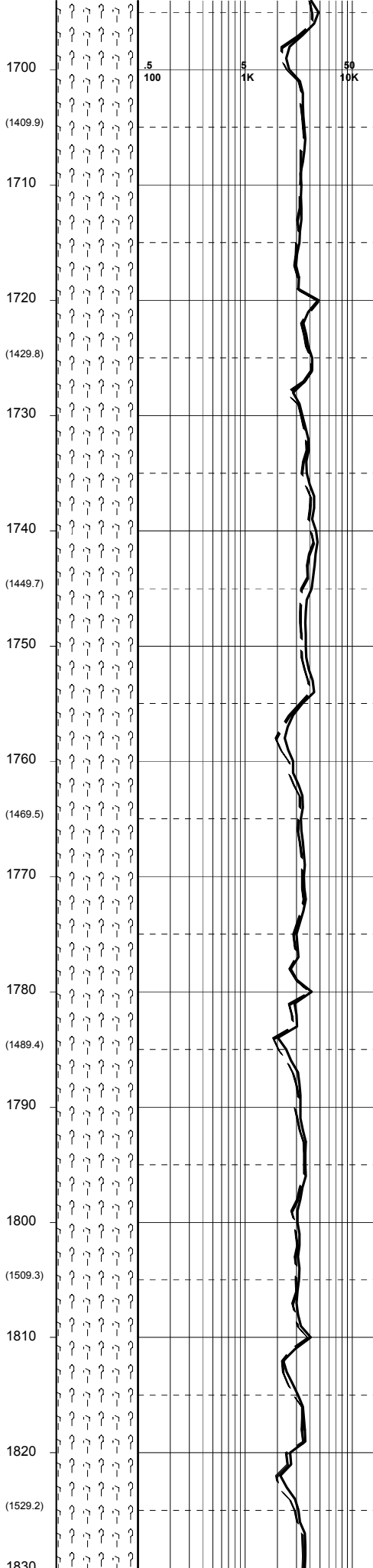
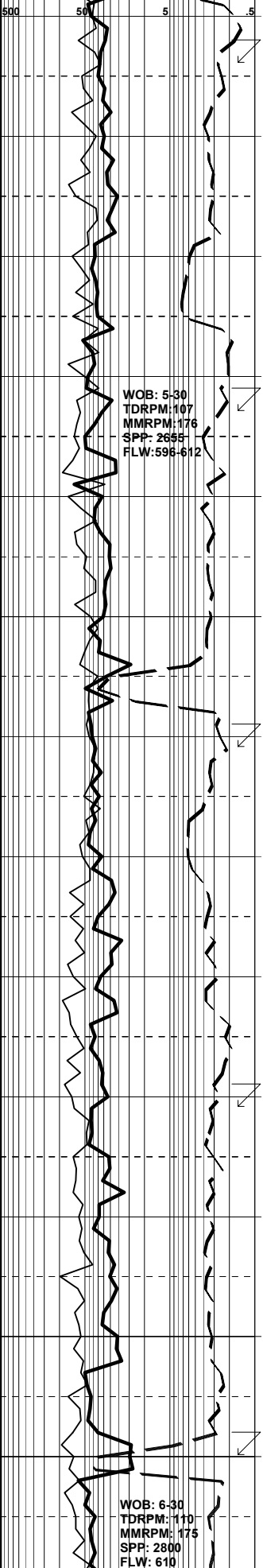
WOB: 5-25
TDRPM: 80
MMRPM: 176
SPP: 2150
FLW: 607







16-10-05



Survey: 1703.77mMD (1410.7mTVD)
6.89° inc 255.33° az

Survey: 1733.18mMD (1439.9mTVD)
6.64° inc 254.42° az

Survey: 1761.59mMD (1468.1mTVD)
6.22° inc 258.30° az

Survey: 1790.90mMD (1497.3mTVD)
6.07° inc 260.30° az

Survey: 1819.91mMD (1526.1mTVD)
5.75° inc 267.97° az

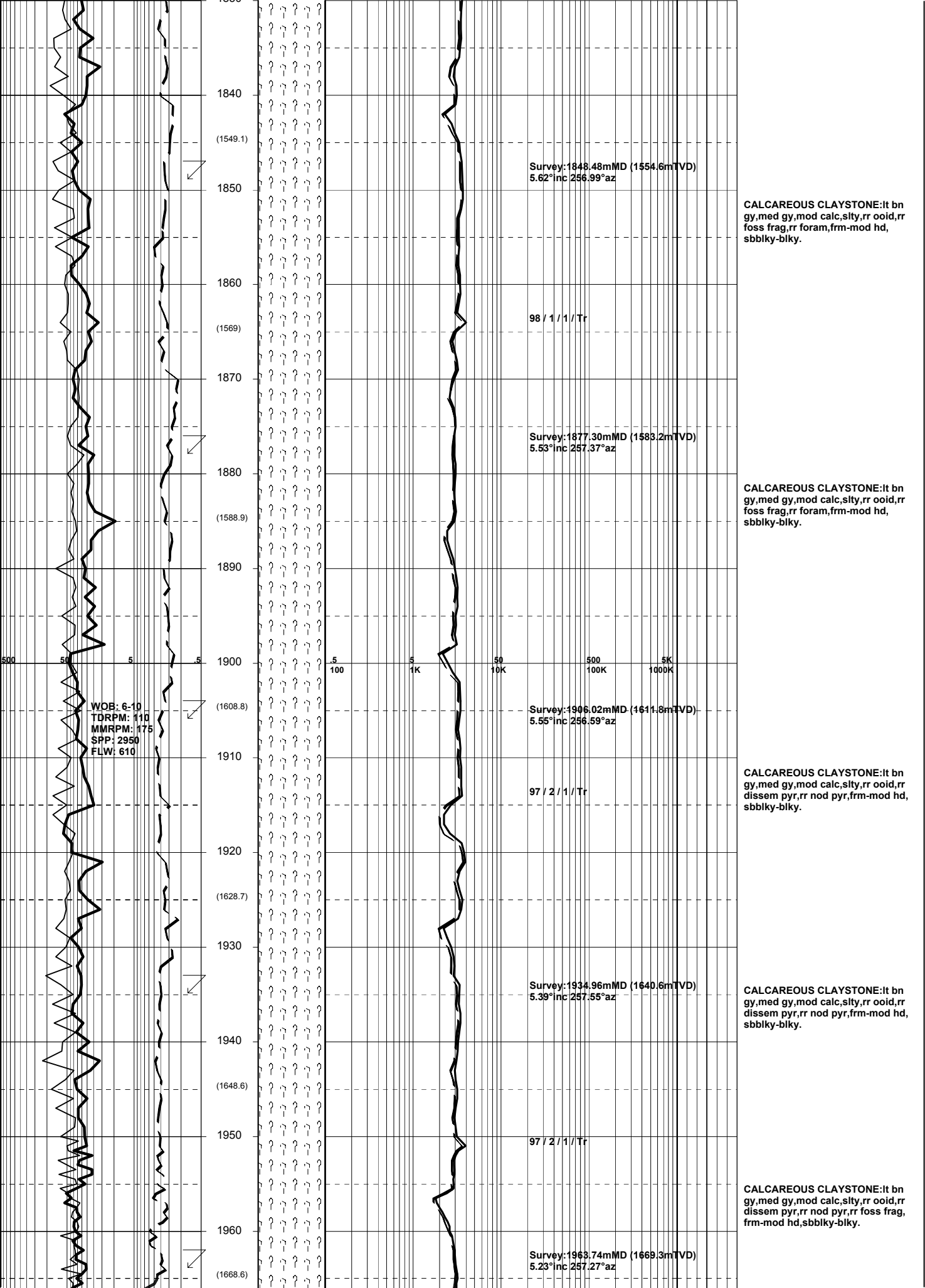
CALCAREOUS CLAYSTONE: it gy, tr bnsh gy, tr med dk gy, mod calc, slty, rr foss frag, tr nod & dissem pyr, tr glauc pell, frm-mod hd, sbblky-blky.

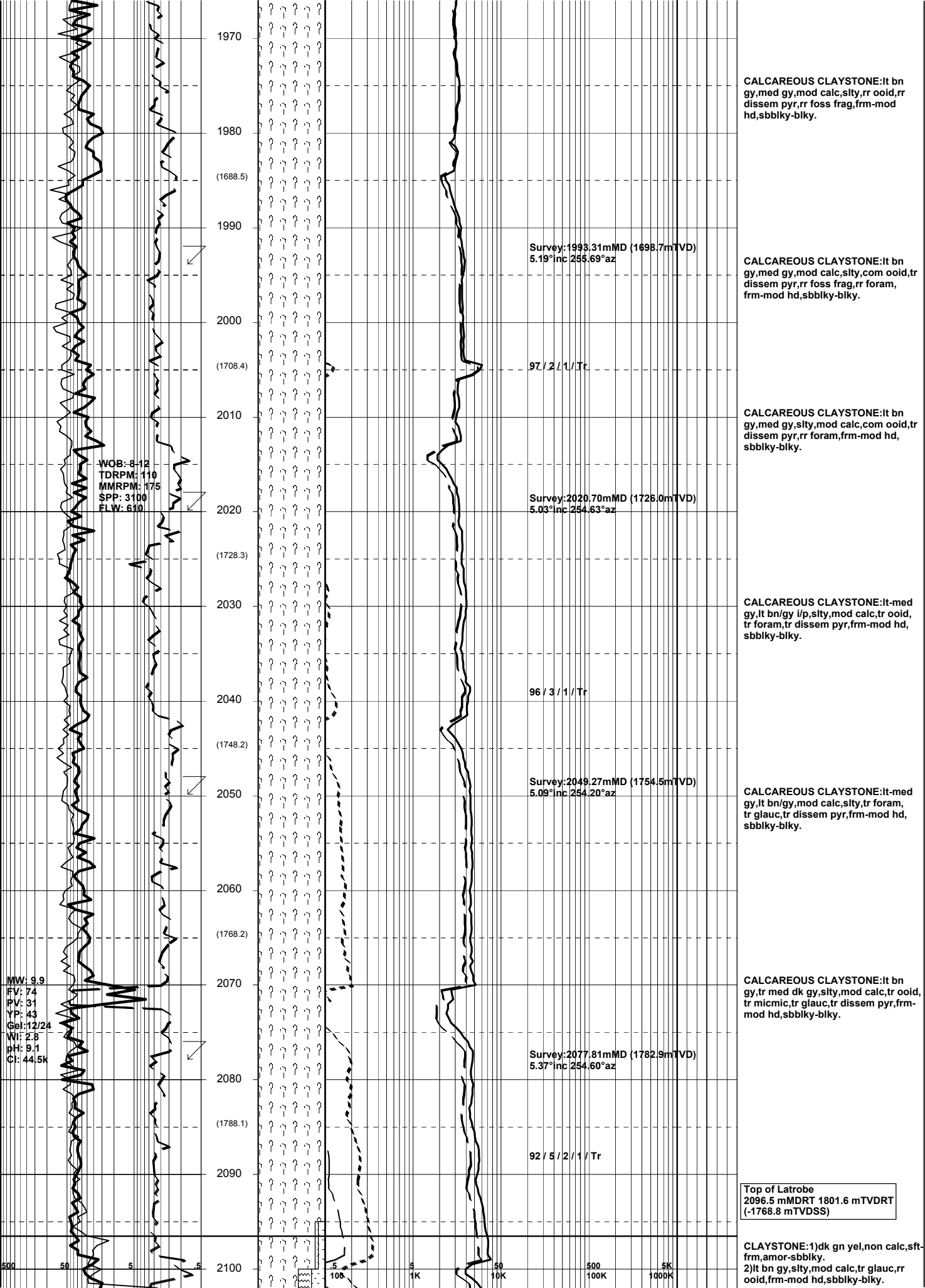
CALCAREOUS CLAYSTONE: it gy, tr bnsh gy, mod calc, slty, rr foss frag, frm-mod hd, sbblky-blky.

CALCAREOUS CLAYSTONE: it gy, occ lt bn/gy, mod calc, slty, tr micmic, tr foss frag, tr ooid, tr foram, frm-mod hd, sbblky-blky.

CALCAREOUS CLAYSTONE: it bn gy, med gy, mod calc, slty, tr ooid, rr foss frag, rr pyr nod, rr dissem pyr, frm-mod hd, sbblky-blky.

CALCAREOUS CLAYSTONE: it bn gy, med gy, mod calc, slty, tr ooid, rr foss frag, rr pyr nod, rr dissem pyr, tr foram, frm-mod hd, sbblky-blky.





1970
1980
(1688.5)
1990
2000
(1708.4)
2010
2020
(1728.3)
2030
2040
(1748.2)
2050
2060
(1768.2)
2070
2080
(1788.1)
2090
2100

WOB: 6-12
TDRPM: 110
MMRPM: 175
SPP: 3100
FLW: 610

MW: 9.9
FV: 74
PV: 31
YP: 43
Gel: 12/24
W: 2.8
pH: 9.1
Cl: 44.5k

Survey: 1993.31mMD (1698.7mTVD)
5.19° inc 255.69° az

97 / 2 / 1 / Tr

Survey: 2020.70mMD (1726.0mTVD)
5.03° inc 254.63° az

96 / 3 / 1 / Tr

Survey: 2049.27mMD (1754.5mTVD)
5.09° inc 254.20° az

Survey: 2077.81mMD (1782.9mTVD)
5.37° inc 254.60° az

92 / 5 / 2 / 1 / Tr

CALCAREOUS CLAYSTONE: It bn gy, med gy, mod calc, slty, rr ooid, rr dissem pyr, rr foss frag, frm-mod hd, sbbiky-blky.

CALCAREOUS CLAYSTONE: It bn gy, med gy, mod calc, slty, com ooid, rr dissem pyr, rr foram, frm-mod hd, sbbiky-blky.

CALCAREOUS CLAYSTONE: It bn gy, med gy, slty, mod calc, com ooid, tr dissem pyr, rr foram, frm-mod hd, sbbiky-blky.

CALCAREOUS CLAYSTONE: It-med gy, It bn/gy i/p, slty, mod calc, tr ooid, tr foram, tr dissem pyr, frm-mod hd, sbbiky-blky.

CALCAREOUS CLAYSTONE: It-med gy, It bn/gy, mod calc, slty, tr foram, tr glauc, tr dissem pyr, frm-mod hd, sbbiky-blky.

CALCAREOUS CLAYSTONE: It bn gy, tr med dk gy, slty, mod calc, tr ooid, tr micmic, tr glauc, tr dissem pyr, frm-mod hd, sbbiky-blky.

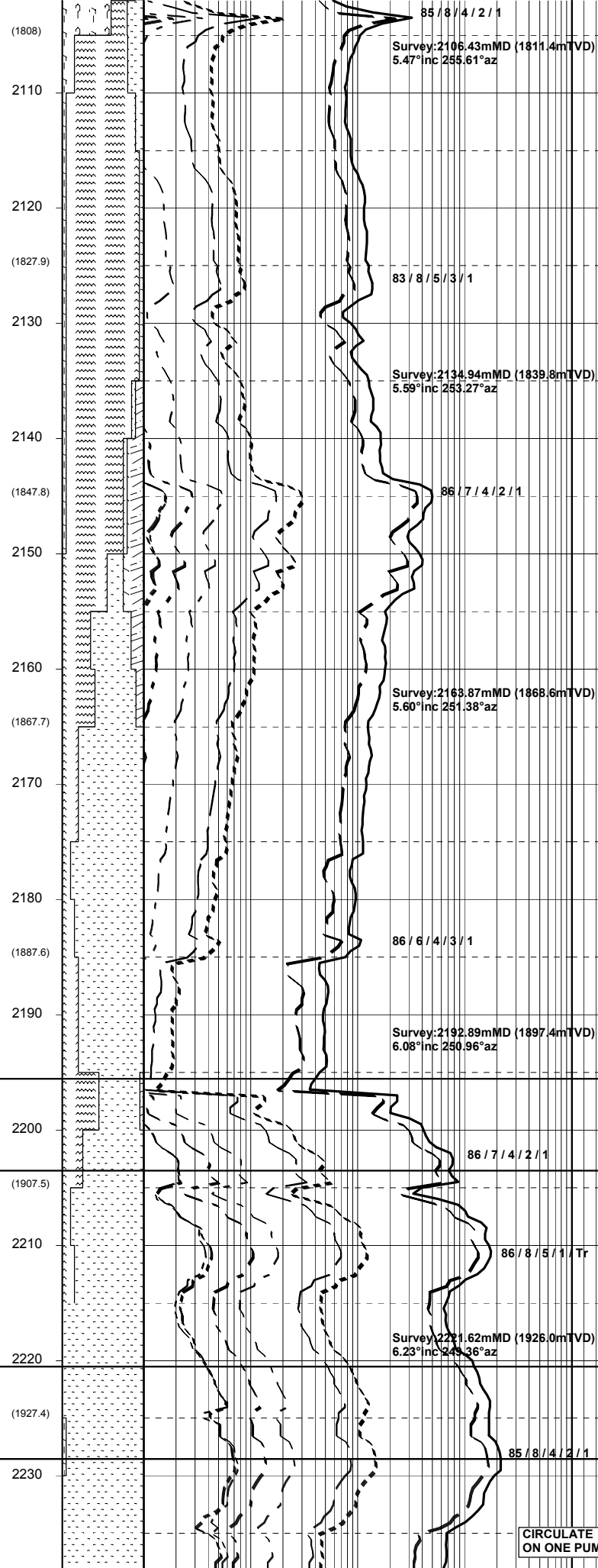
Top of Latrobe
2096.5 mMDRT 1801.6 mTVDRT
(-1768.8 mTVDSS)

CLAYSTONE: 1) dk gn yel, non calc, sft-frm, amor-sbbiky.
2) It bn gy, slty, mod calc, tr glauc, rr ooid, frm-mod hd, sbbiky-blky.

500 50 5 5 5 100 5 1K 50 10K 500 5K 100K 1000K

WOB: 5-8
TDRPM: 106
MMRPM: 176
SPP: 2920
FLW: 606

WOB: 3-6
TDRPM: 110
MMRPM: 175
SPP: 2950
FLW: 610



CIRCULATE ON ONE PUMP

SILTSTONE:pl bn,dk yel bn,v aren g/t vf SST,sli calc,tr micmic,mod hd, blkly.

SANDSTONE:wh-pl gn,med gn,vf-f, mod wl srt,sa-sr,com glauc mtx,hd aggs,ti-v pr vis & inf por,no fluor.

SILTSTONE:mod bn-dk yel bn,v aren g/t vf SST,com glauc pelL,tr micmic, mod hd,blkly.

SANDSTONE:wh-pl gn,mod gn,vf-f, mod wl srt,sa-sr,com glauc mtx,hd aggs,ti-v pr inf por,no fluor.

VOLCANICS:gysh gn-gy bl gn,dom chlorite,xln,hd,com bit crushed to rock flour.

SANDSTONE:wh-v pl gn,occ med gy,vf-f,mod wl srt,sa-sr,com glauc mtx, occ micropyr mtx,tr nod pyr,hd agg, ti-v pr inf & vis por,no fluor.

SILTSTONE:mod bn-dk yel bn,v aren g/t vf SST,com glauc pelL,tr micmic, mod hd,blkly.

SANDSTONE:wh-pl gn,lt gy,vf-f,mod wl srt,sa-sr,mod micropyr mtx,occ glauc mtx,dom metamorphosed qtz grn,com nod pyr,dom hd agg,ti-v pr vis por,no fluor.

VOLCANICS:gysh gn-gysh bl gn, dom chlorite,xln,hd,com bit crushed to rock flour.

SILTSTONE:mod bn-dk yel bn,v aren g/t vf SST,com glauc pelL,tr micmic, mod hd,blkly.

Top of Coarse Clastics (N-1 Sands) 2195.5 mMDRT 1900.0 mTVDRT (-1867.2 mTVDSS)

SANDSTONE:clr-trnsl,crs-dom v crs, mod wl srt,sa-sr,wk pyr cmt,tr nod pyr,dom lse,gen cln,fr-gd inf por.

FLUORESCENCE:2185-2215 Tr-2% mod bri gn yel pnpt mineral flour, no cut

Base of Waste 2203.5 mMDRT 1908.0 mTVDRT (-1875.2 mTVDSS)

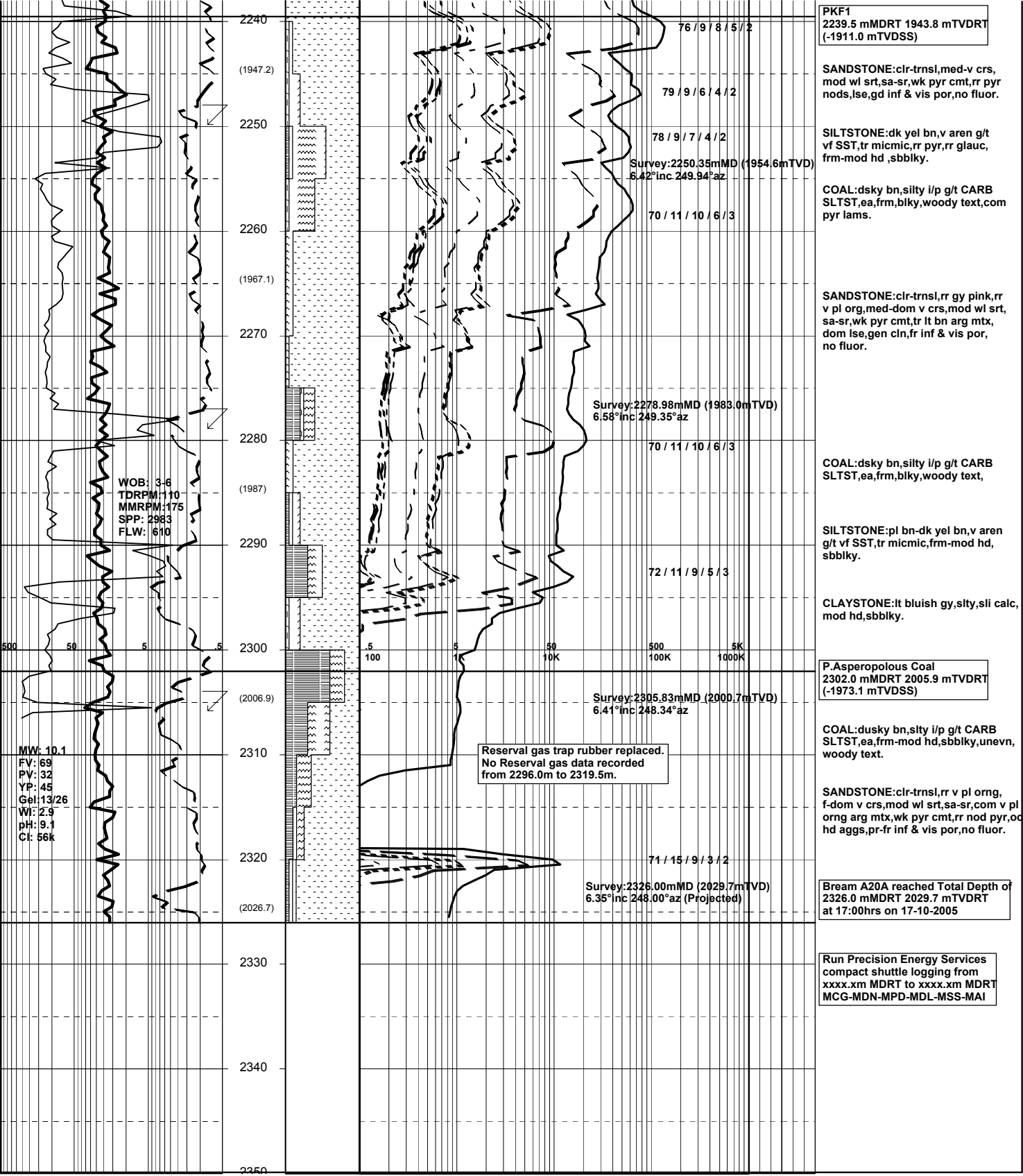
SILTSTONE:pl yel bn,v aren g/t vf SST,tr micmic,tr glauc,tr dissem pyr,mod hd-hd,sbbiky-blky.

CBF2 2220.5 mMDRT 1924.9 mTVDRT (-1892.1 mTVDSS)

SANDSTONE:clr-trnsl,crs-dom v crs, occ med,mod wl srt,sa-sr,wk pyr cmt, tr nod pyr,dom lse,gen cln,fr-gd inf & vis por,no fluor.

CBF1 2228.5 mMDRT 1932.8 mTVDRT (-1900.0 mTVDSS)

CLAYSTONE:lt bl gy,sli calc,sity, mod hd-hd,blkly.



WOB: 3-6
 TDRPM: 110
 MMRPM: 175
 SPP: 2983
 FLW: 610

MW: 10.1
 FV: 69
 PV: 32
 YP: 45
 Gel: 13/26
 WI: 2.9
 pH: 9.1
 CI: 56k

Reserval gas trap rubber replaced.
 No Reserval gas data recorded
 from 2296.0m to 2319.5m.

PKF1
 2239.5 mMDRT 1943.8 mTVDRT
 (-1911.0 mTVDSS)

SANDSTONE:clr-trnsl,med-v crs,
 mod wl srt,sa-sr,wk pyr cmt,rr pyr
 nod,lse,gd inf & vis por,no fluor.

SILTSTONE:dk yel bn,v aren g/t
 vf SST,tr micmic,rr pyr,rr glauc,
 frm-mod hd ,sbbkly.

COAL:dsky bn,silty i/p g/t CARB
 SLTST,ea,frm,blkly,woody text,com
 pyr lams.

SANDSTONE:clr-trnsl,rr gy pink,rr
 v pl org,med-dom v crs,mod wl srt,
 sa-sr,wk pyr cmt,tr lt bn arg mtx,
 dom lse,gen cln,fr inf & vis por,
 no fluor.

COAL:dsky bn,silty i/p g/t CARB
 SLTST,ea,frm,blkly,woody text,

SILTSTONE:pl bn-dk yel bn,v aren
 g/t vf SST,tr micmic,frm-mod hd,
 sbbkly.

CLAYSTONE:lt bluish gy,sity,sl calc,
 mod hd,sbbkly.

P.Asperopolous Coal
 2302.0 mMDRT 2005.9 mTVDRT
 (-1973.1 mTVDSS)

COAL:dsuky bn,silty i/p g/t CARB
 SLTST,ea,frm-mod hd,sbbkly,unevvn,
 woody text.

SANDSTONE:clr-trnsl,rr v pl org,
 f-dom v crs,mod wl srt,sa-sr,com v pl
 org arg mtx,wk pyr cmt,rr nod pyr,od
 hd aggs,pr-fr inf & vis por,no fluor.

Bream A20A reached Total Depth of
 2326.0 mMDRT 2029.7 mTVDRT
 at 17:00hrs on 17-10-2005

Run Precision Energy Services
 compact shuttle logging from
 xxxx.xml MDRT to xxxx.xml MDRT
 MCG-MDN-MPD-MDL-MSS-MAI

76 / 9 / 8 / 5 / 2

79 / 9 / 6 / 4 / 2

78 / 9 / 7 / 4 / 2

Survey:2250.35mMD (1954.6mTVD)
 6.42°inc 249.94°az

70 / 11 / 10 / 6 / 3

Survey:2278.98mMD (1983.0mTVD)
 6.58°inc 249.35°az

70 / 11 / 10 / 6 / 3

72 / 11 / 9 / 5 / 3

Survey:2305.83mMD (2000.7mTVD)
 6.41°inc 248.34°az

71 / 15 / 9 / 3 / 2

Survey:2326.00mMD (2029.7mTVD)
 6.35°inc 248.00°az (Projected)

2240

(1947.2)

2250

2260

(1967.1)

2270

2280

(1987)

2290

2300

(2006.9)

2310

2320

(2026.7)

2330

2340

2350